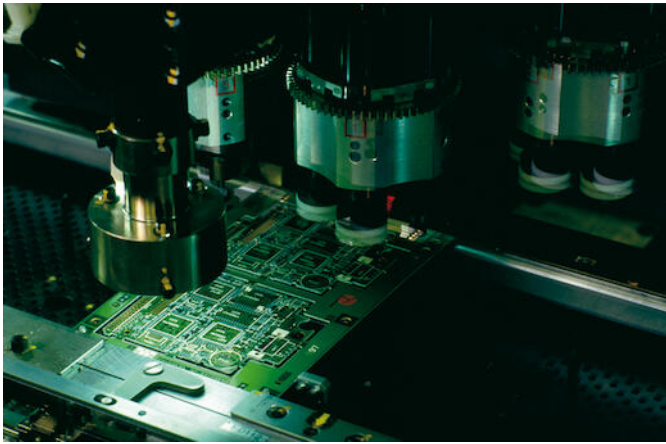


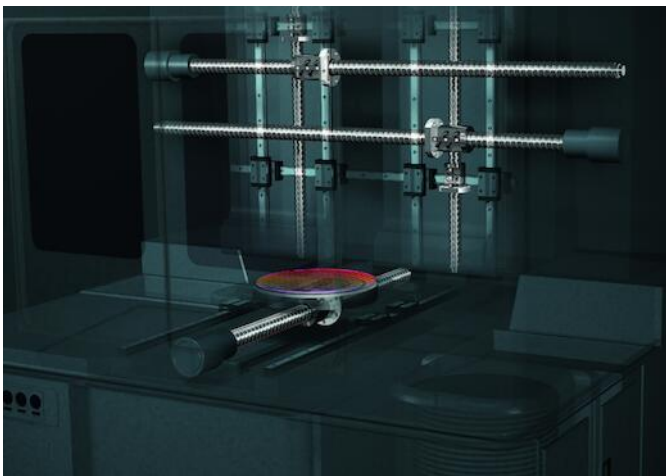
All for Smooth and Accurate Movement

Long-standing Know-how

THK's company name stands for "Toughness", "High Quality" and "Know-how". Our aim is to contribute to the improvement of society and development of industry by focusing on these three principles in our technology development and product manufacturing processes.

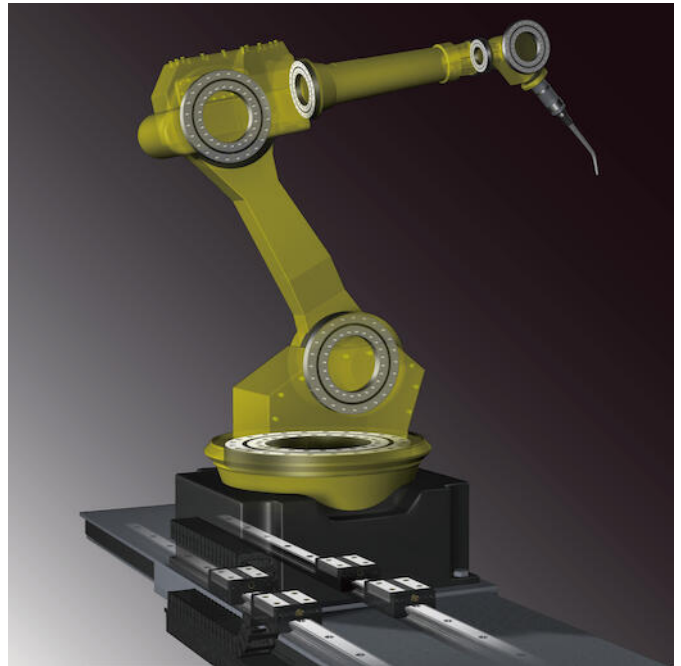


Since the development of its first LM (linear motion) guide in 1972, THK has continuously developed this technology further. Today it is one of the most essential parts of the machine industry. Furthermore it is used in a wide range of industries, such as machine tools, semiconductor production equipment, industrial robots, automobiles, aircraft, 3D printer, medical equipment, wind power generation, next-generation robotics, housing.



Reliability and Availability - Worldwide

THK's products enable rapid improvements in the accuracy, speed and potential of advanced mechatronic instruments. With THK's LM guides, machine tools and industrial robots become capable of ultra-precise operations, and semiconductor-manufacturing devices can operate in submicron units.



THK's head office is based in Tokyo, Japan. 36 manufacturing facilities and 128 sales offices are available worldwide. In Europe, our production is located in Ireland, France, Germany and Czech.

Our Products

Precision parts for industry

- LM guides, Ball screws, Ball splines, Actuators, precision stages and Cross roller bearings

Automotive

- Linkage, Suspension

Special products

- Seismic isolation tables, Damping units